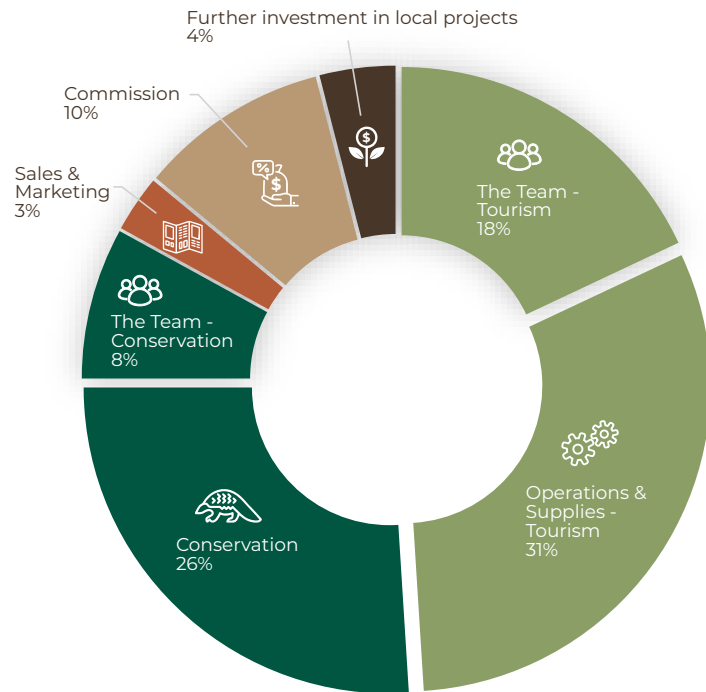


# HOW YOUR STAY IMPACTS NATURE AND PEOPLE

## OUR 4C IMPACT STATEMENT: JANUARY - DECEMBER 2021








We are a proud member of The Long Run, a global network of tourism businesses committed to conserving ecosystems and improving the well-being of people through a holistic balance of the 4Cs — Conservation, Community, Culture, and Commerce. The Long Run is hosted by Preferred by Nature, a non-profit organisation working in 100+ countries to support better land management and business practices that benefit people, nature, and the climate.

### YOUR CONTRIBUTION TO THE LOCAL ECONOMY



33%	63%	4%
Local	National	Other

### OUR INVESTMENT IN 4C PROJECTS EXPLAINED

86%	  Conservation, biodiversity & habitat restoration, reserve management & anti-poaching. South Africa's largest privately protected reserve.
9%	  On-site health care centre, providing a free community service to 2048 patients within a 100 km radius.
5%	   Donations to Tswalu Foundation enabled 14 research projects in 2021, including studies of reptiles, ground pangolins, social weaver colonies, climate impact & cultural heritage.

### BY STAYING WITH US YOU HELP

	Conserve 114,000 ha incl. nearly 500 species of mammals, birds, butterflies, and reptiles, by dedicating 32% of Tswalu's team to conservation.
	Impact the lives of 282 residents, and 991 in the greater community, via our health care centre.
	Support 3 Artists in Residence, through the Tswalu Foundation, and 2 archaeological projects.
	Invest 5,779m USD in nature and people in 2021.



Method vetted by The Long Run for January-December 2021. For more details about the framework used to make these calculations please go to [thelongrun.org/4CsImpactStatement](https://thelongrun.org/4CsImpactStatement).



**TSWALU**