

Walter Voigt
Tswalu, A Wilderness Revisited



Image Credits: Walter Voigt



Walter Voigt

Tswalu, A Wilderness Revisited

An exhibition in collaboration with Everard Read, Tswalu Foundation's Artist in Residence Programme, and Fireblade Aviation.

07 October 2023 – 31 January 2024

***all prices include South African VAT of 15%**

For more information please contact:

Stephanie Le Roy stephanie@everard.co.za | +27 79 862 0107

Zoleka Motlhasedi zoleka@everard.co.za | +27 81 521 3440

www.everard-read.co.za



EVERARD READ | JOHANNESBURG



In collaboration with the Tswalu Foundation's Artists in Residence programme, we are thrilled to present the second solo exhibition by the renowned landscape painter, Walter Voigt. Following Voigt's initial residency and subsequent sell-out exhibition, Voigt returned to Tswalu Kalahari Reserve to document the dramatic moods of this semi-arid wilderness following a couple of seasons of good rain in the southern Kalahari. 'Tswalu, A Wilderness Revisited' celebrates the artist's reacquaintance with this semi-arid savannah that aptly portrays nature's extraordinary capacity for abundance and rejuvenation after rain.

Tswalu Kalahari is a magical place with its ancient landscapes characterized by the magnificent Korannaberg mountains and rolling dunes. The clear night skies, pristine landscapes, and desert-adapted fauna and flora all combine to make Tswalu a spiritual experience that only the unique Kalahari can create. The vast areas of red sand, shrubs and tall trees are home to an amazing variety of wildlife, specially adapted to survive in harsh, dry conditions. The property significantly contributes to conservation of species and ecosystems in the Northern Cape, including numerous rare and endangered species.

The reserve has a strong community and conservation ethic, with numerous research projects that have been sanctioned by the Oppenheimer family. The Tswalu Foundation was created in 2008 to develop a platform upon which local and international visitors could contribute and become involved in community work and environmental research on the reserve.

The Foundation has been fundamental in developing a greater appreciation for the beauty of the Kalahari and its diverse and abundant wildlife. Although Tswalu Kalahari and the Oppenheimer family support numerous research projects, the Foundation ensures that more researchers are afforded the opportunity to study this unique land.

One of the programmes managed through the Tswalu Foundation is the Artists in Residence Programme (AiR), which was initiated in 2015 with the idea of further supporting research on Tswalu through the generation of income for research as well as providing artists an opportunity to be inspired by Tswalu. The selection of the artists to join the Tswalu Foundation AiR programme is guided by the Everard Read Gallery in Johannesburg. Together we are showcasing the depth and talent of South African artists as well as uncovering new artistic talent. The importance of artists portraying and depicting this vulnerable landscape should not be underestimated. Art portrays the natural world in varying forms, from the intimate to the majestic, and evokes the mood and feeling of a place. The beauty, magnificence and, in some cases, hardships of an area are clearly reflected through art. - Nicky Oppenheimer



ABOVE

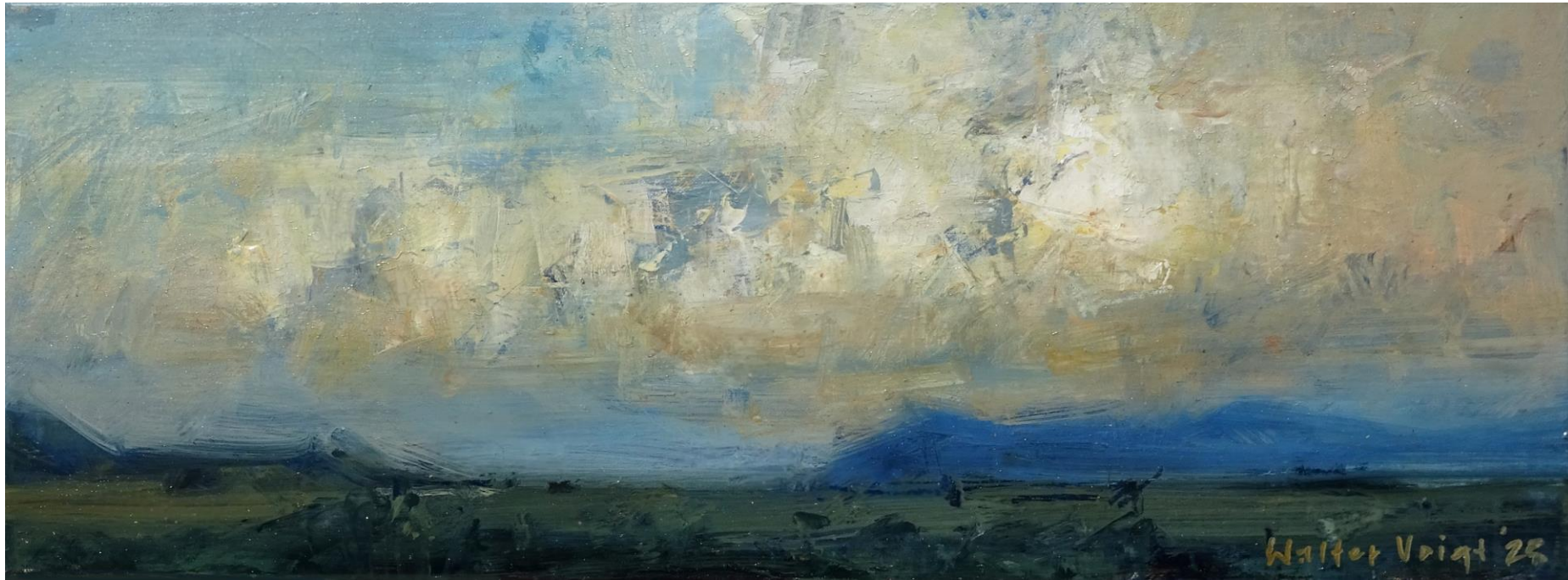
Sunset near Rogella Pan
Oil on Canvas
60 x 100 cm
R95 000.00

BELOW

Grassy plains with Korannaberg Mountains, Tswalu
Oil on Canvas
60 x 100 cm
R95 000.00



Gordonia Duneveld with Distant Korannaberg Mountains, Tswalu
Oil on Canvas
80 x 160 cm
R135 000.00



ABOVE

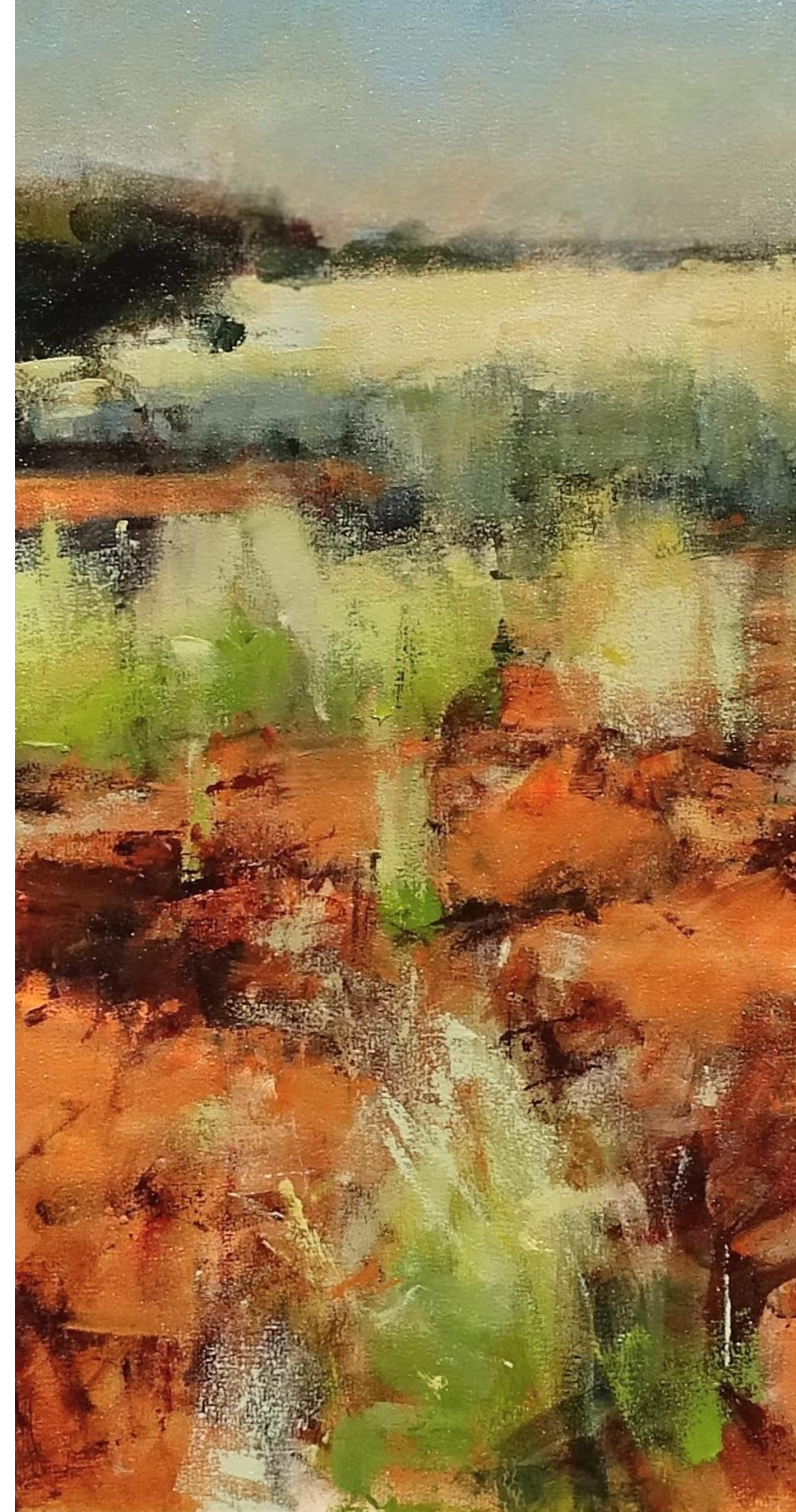
Tswalu Cloud Study 1
Oil on Canvas
15 x 41 cm
R38 000.00

BELOW

Tswalu Cloud Study 4
Oil on Canvas
15 x 41 cm
R38 000.00



Gordonia Duneveld with Camelthorn, Tswalu
Oil on Canvas
75 x 140 cm
R120 000.00





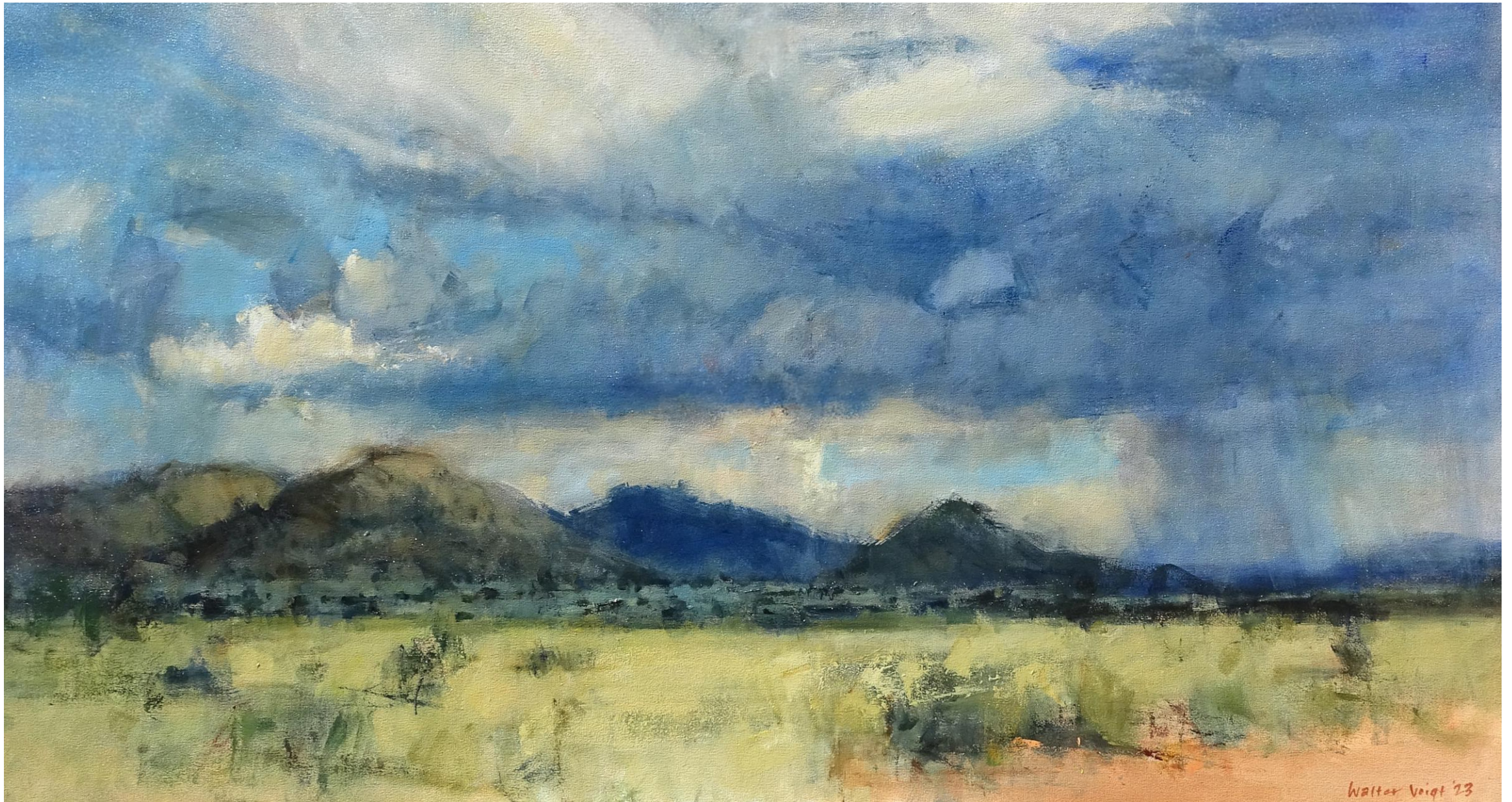
ABOVE
 Tswalu Cloud Study 3
 Oil on Canvas
 15 x 36 cm
 R35 000.00



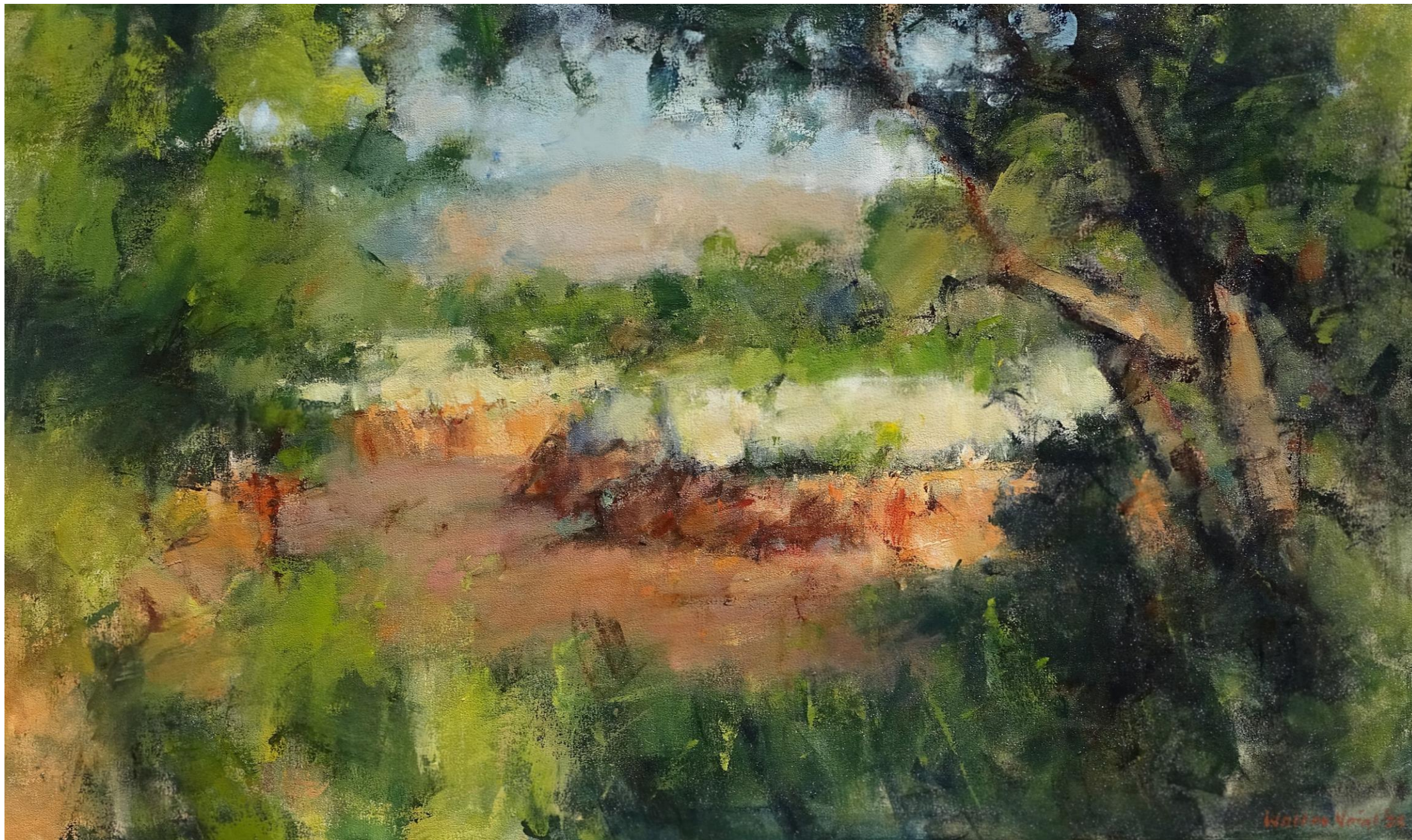
BELOW
 Tswalu Cloud Study 2
 Oil on Canvas
 15 x 36 cm
 R35 000.00



Dark Skies with Rainbow over
Korannaberg, Tswalu
Oil on Canvas
60 x 100 cm
R95 000.00



Afternoon Thunderstorm Tswalu Thornveld
Oil on Canvas
75 x 140 cm
R120 000.00



Dry Stream Bed with
Camelthorn, Tswalu
Oil on Canvas
60 x 100 cm
R95 000.00



Early Morning District Road, Tswalu
Oil on Canvas
75 x 140 cm
R120 000.00



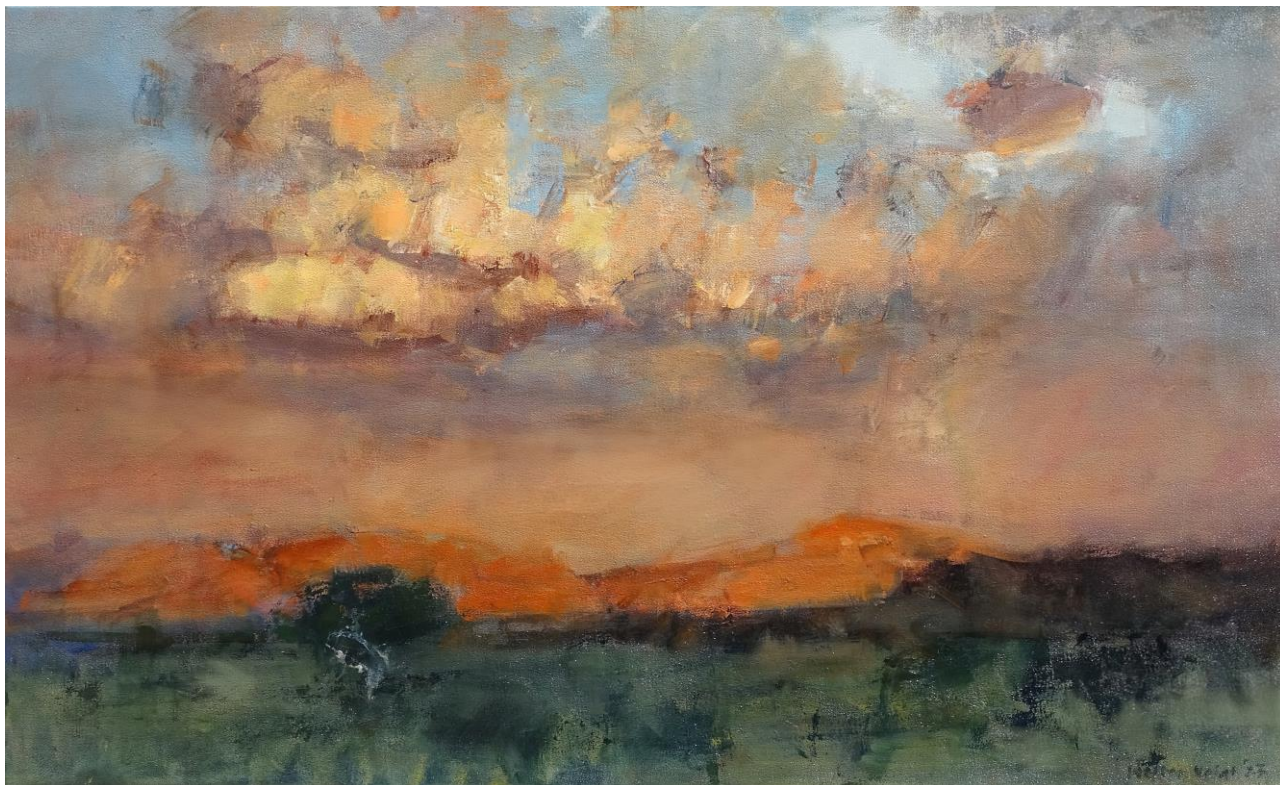
View Towards Magwataneng Hill, Tswalu
Oil on Canvas
75 x 140 cm
R120 000.00



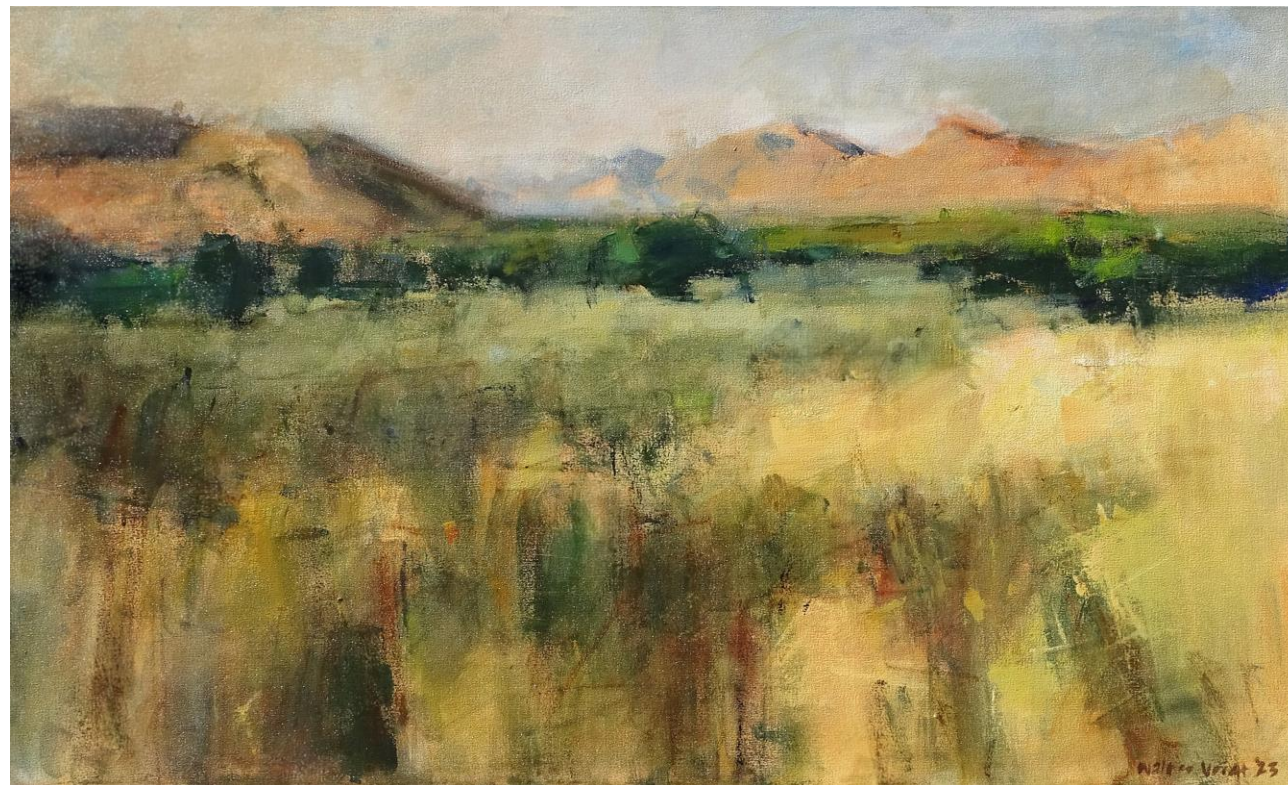
Early Morning Savanna Plains 2, Tswalu
Oil on Canvas
75 x 140 cm
R120 000.00



Early Morning Savanna Plains 1, Tswalu
Oil on Canvas
75 x 140 cm
R120 000.00



Evening Light after the Storm, Tswalu
Oil on Canvas
60 x 100 cm
R95 000.00



Savanna Plain, Tswalu
Oil on Canvas
60 x 100 cm
R95 000.00



Olifantshoek Plains Thornveld with Sunset, Tswalu
Oil on Canvas
75 x 170 cm
R135 000.00



Shadows on the Thornveld Plains, Tswalu
Oil on Canvas
60 x 92 cm
R90 000.00



Stormcloud over Korannaberg Mountains, Tswalu
Oil on Canvas
59 x 84 cm
R80 000.00



ABOVE

Sunrise Plains Study, Tswalu
Oil on Canvas
15 x 41 cm
R38 000.00

BELOW

Olifantshoek Plains Thornveld with Raincloud, Tswalu
80 x 160 cm
Oil on Canvas
R135 000.00



Tswalu Storm with Rainbow
Oil on Canvas
90 x 160 cm
R145 000.00



Tswalu Grassveld with Camelthorn
Oil on Canvas
60 x 100 cm
R95 000.00



ABOVE

Last Light on the Korannaberg, Tswalu
Oil on Canvas
75 x 150 cm
R125 000.00

BELOW

Late Afternoon near Rogella Pan, Tswalu
Oil on Canvas
75 x 140 cm
R120 000.00





WALTER VOIGT

Born in Johannesburg in 1971, Walter Voigt grew up in the mountainous Lowveld Escarpment region near Nelspruit in Mpumalanga, South Africa. He was educated at Uplands Primary School, St Alban's College and Lowveld High School. In 1992 he began a three-year course in Graphic Design at The Witwatersrand Technikon in Johannesburg, majoring and specialising in illustration.

Walter Voigt's technical ability combined with a passion for the sky and landscape allow him to capture the elements of light, space, air and movement. There is a passionate love affair between earth and sky in Walter Voigt's work. His paintings are atmospheric spaces designed for contemplation, "visual meditations" of sensual richness of colour, light and form. Voigt's moody landscapes involve broad, energetic strokes, followed by lighter more sensitive touches. There is a vigorous, scratchy linear construction to his work, including other media such as palette knife, which Voigt says is easier to control than working with just a brush, giving variety and expression to the mark making process.

Voigt celebrates the African landscape as viewed through the European conventions of the sublime and expressionist. As he states, "The Turner-esque views project a very emotive content upon the landscape. The quality of light and the juxtaposition with dark becomes a metaphor for broader, more ethereal concepts."

His celebration of the landscape is clearly structured in the very physical nature of the paint, where the manipulations skillfully depict a deep love and reverence for nature. Voigt adds, "The works become a pantheistic representation, almost having a spiritual residue encapsulating the place. This is not an attempt to record the landscape but rather an effort to allow the viewer to experience the particular light that is unique to the southern parts of Africa."

Walter Voigt is a full time artist specialising in oil paintings and exhibits his work at the Everard Read Gallery in Rosebank, Johannesburg, Cape Town, London as well as Knysna Fine Art and The White River Gallery in Mpumalanga. Walter also gives workshops.

SELECTED SOLO EXHIBITIONS

2023 Tswalu- A Wilderness Revisited, Fireblade Aviation, Johannesburg, South Africa
2022 New Landscapes, Everard Read, London
2021 Revered Landscapes, White River Gallery
2020 Painting for the Lowveld, February Online Portfolio, Everard Read, Johannesburg
Winter Landscapes, June Online Portfolio, Everard Read, Johannesburg
2018 Kruger – Sacred Spaces, Everard Read, Johannesburg, South Africa
2016 Raw Beauty – Mapungubwe, Everard Read, Johannesburg, South Africa
2015 Bushveld Landscapes, Everard Read, Johannesburg, South Africa
2014 Bushveld Landscapes, White River Gallery, Mpumalanga, South Africa
2009 Mali, Everard Read, Johannesburg, South Africa
2008 Wild Horizons, Everard Read, Johannesburg, South Africa
2004 Everard Read, Johannesburg, South Africa
2003 Everard Read, Johannesburg, South Africa

SELECTED GROUP SHOWS

2021 Spring Show, Everard Read, Johannesburg, South Africa
2020 Tiny, Everard Read, Johannesburg, South Africa
2014 Winter Group, Everard Read, Cape Town, South Africa
2013 Centenary Exhibition, Everard Read, Johannesburg, South Africa
2012 Winter Group, Everard Read, Johannesburg, South Africa
2011 Shift Exhibition, Everard Read, South Africa
2010 A View from the South, Everard Read Johannesburg, South Africa
2007 Southern Views – SA Landscapes, Everard Read, South Africa
2005 New Everard Read Exhibition
2002 Oil Paintings, Everard Read, South Africa
1999 Everard Read Millennium Exhibition, South Africa
1997 International Wildlife and Natural History Paintings & Sculpture, Everard Read Gallery, South Africa



Image Credits: Walter Voigt

EVERARD READ | JOHANNESBURG



Modern and contemporary art from southern Africa

Everard Read Johannesburg
6 Jellicoe Ave Rosebank | Johannesburg 2196
+27 11 788 4805
gallery@everard.co.za | www.everardread.co.za

ER JOHANNESBURG | CAPE TOWN | LONDON | FRANSCHHOEK