



## TARKUNI

A private homestead in the heart of South Africa's largest private reserve, offering the only safari of its kind in an ecologically significant, biodiversity-rich landscape.

**TSWALU**



Tucked into a secluded valley in the Korannaberg foothills, Tarkuni is for the exclusive use of up to 10 guests in 5 suites.

Unlimited access to 118,000ha of restored wilderness in a private reserve, offering exclusive game-viewing opportunities.

Exclusive-use private homestead with communal living spaces and accommodation in 5 spacious suites, all under one roof.

Accommodation for a maximum of 10 guests.

Private 4X4 vehicle, with an experienced guide and tracker.

Private staff, including a dedicated house manager and private chef.

Ideal for families or friends seeking privacy, space, and flexibility.

Children of all ages are welcome.

Access to the full Tswalu experience, including a gym, spa, boutique, and photographic studio.





## This is a home for the traveller who values privacy, freedom, and choice.

Tarkuni has been carefully reimagined to sharpen what has always been a singular setting for a private safari experience defined by quiet luxury, generous South African hospitality and an authentic sense of place.

The natural flow between indoor and outdoor spaces has been reconsidered, enhancing the connection to the landscape while retaining the homestead's character.

New furnishings throughout, enhancing the earthy, tactile comfort and ease of each space.

Bedrooms and bathrooms updated and refreshed, including the private terraces.

Mezzanine-level lounge and library for relaxing, whether seeking connection or time alone.

New self-service bar-deli, stocked with homemade local snacks, drinks and award-winning South African wines.



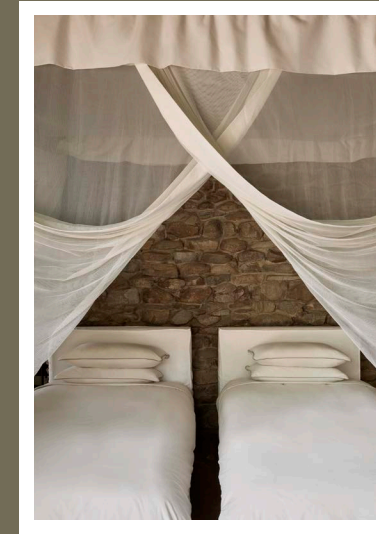




TSWALU



The bedroom suites lead off the homestead's central living area. With all five suites under one roof, Tarkuni is well-suited to a multigenerational family or group of friends.



#### TARKUNI SUITES AT A GLANCE:

- Super king, extra-length bed – can be configured as two twins but not split
- Spacious en suite bathroom with a double vanity, freestanding bath, walk-in shower and outdoor shower
- Private outdoor terrace with sun loungers
- Writing desk for remote working
- Ceiling fan and AC

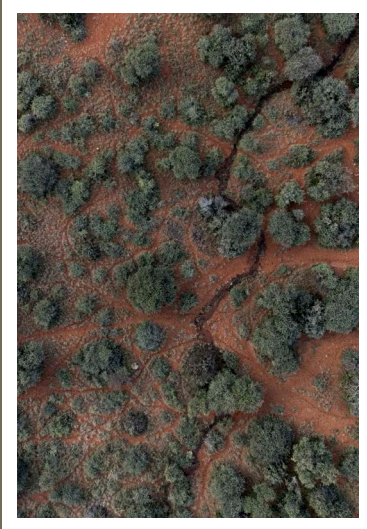


TSWALU



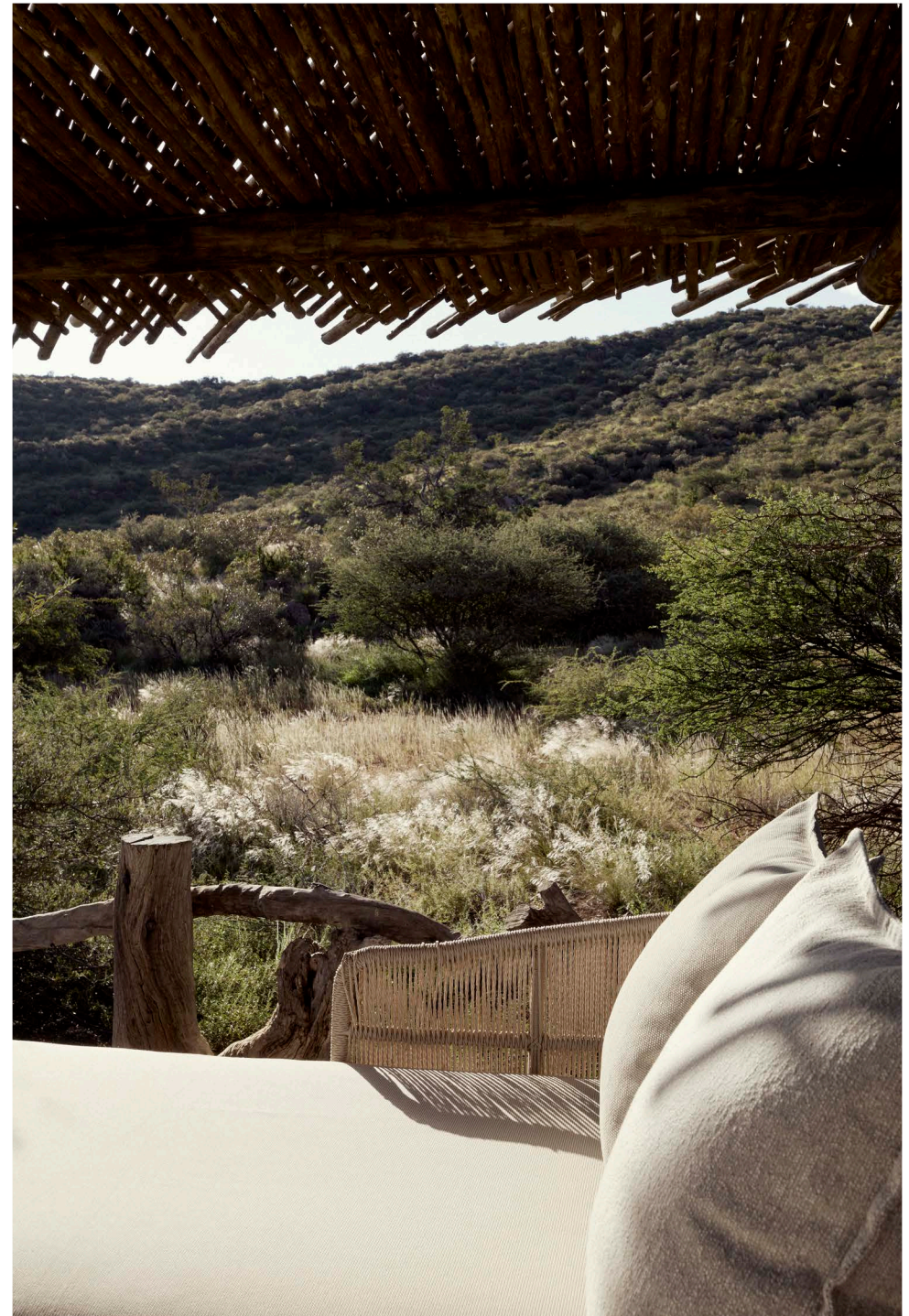
TSWALU





Set apart from the main homestead, a tsala with daybeds offers a moment of rest and contemplation between safari activities. Ideal for birding, reading, afternoon tea, or a relaxing massage.

TSWALU







At Tarkuni, days on safari take on a rhythm of their own. Guests have the freedom and flexibility to shape every aspect of their day, from when they want to head out with their guide and tracker to mealtimes.

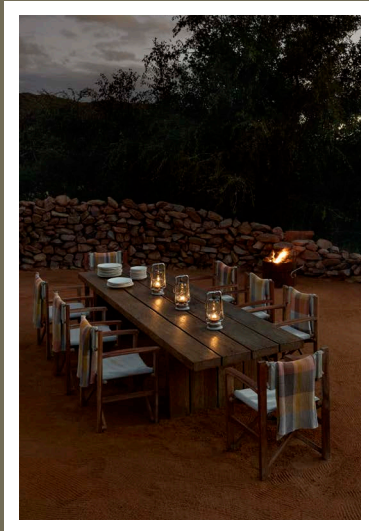


Tswalu deserves to be experienced at a slower pace, to appreciate the many rare, endangered and elusive species found in this biodiversity-rich ecosystem on the southern edge of the Kalahari. Exclusive-use Tarkuni is the ultimate way to feel immersed in this extraordinary landscape.

**TSWALU**

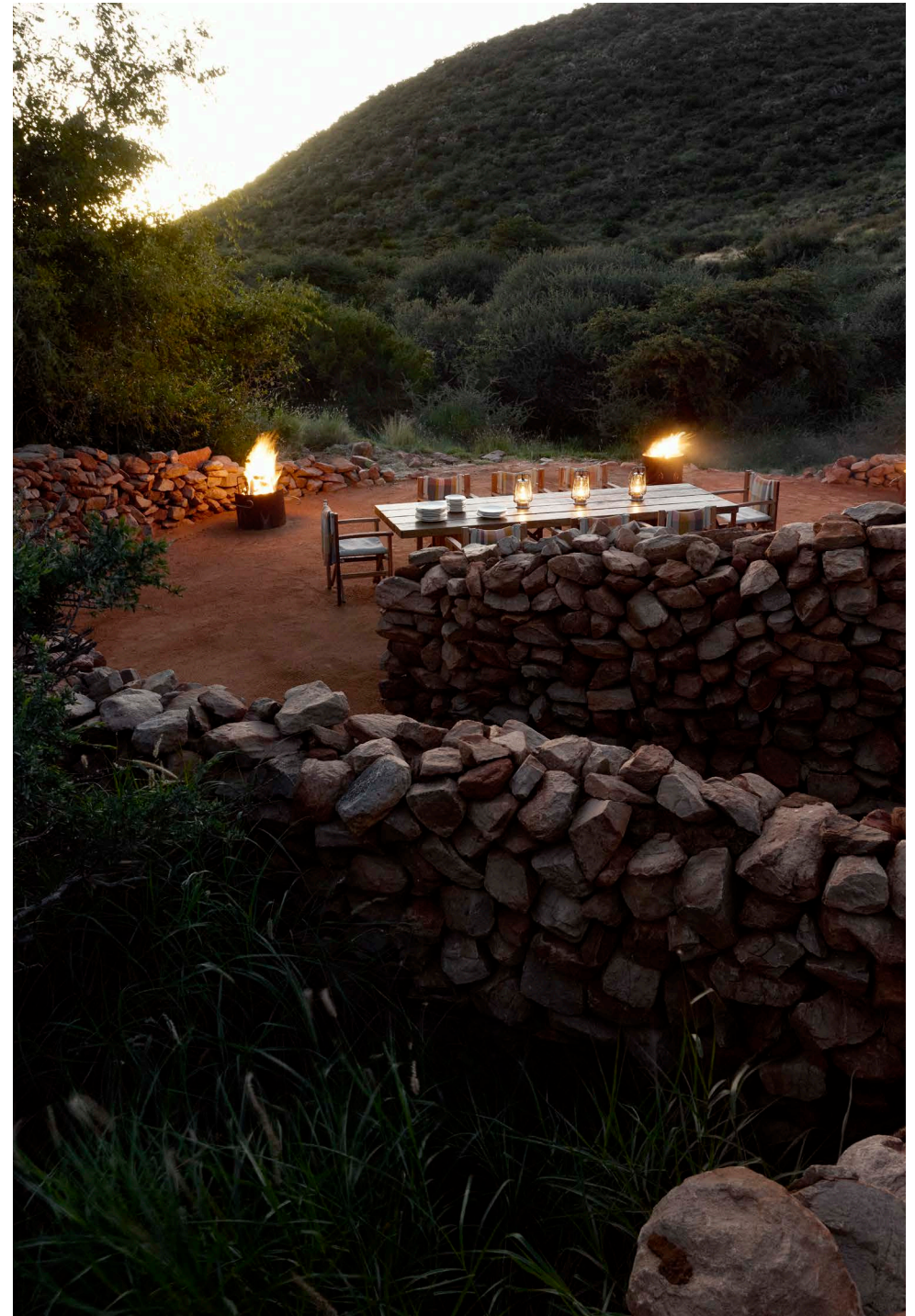


Overlooking a waterhole, the cosy fire pit is a place where everyone in the house gathers for morning coffee and post-game drive sundowners.



Featuring the best seasonal produce and local ingredients, meals are always relaxed affairs – a barbecue dinner in Tarkuni’s private boma under the stars is a guest favourite.

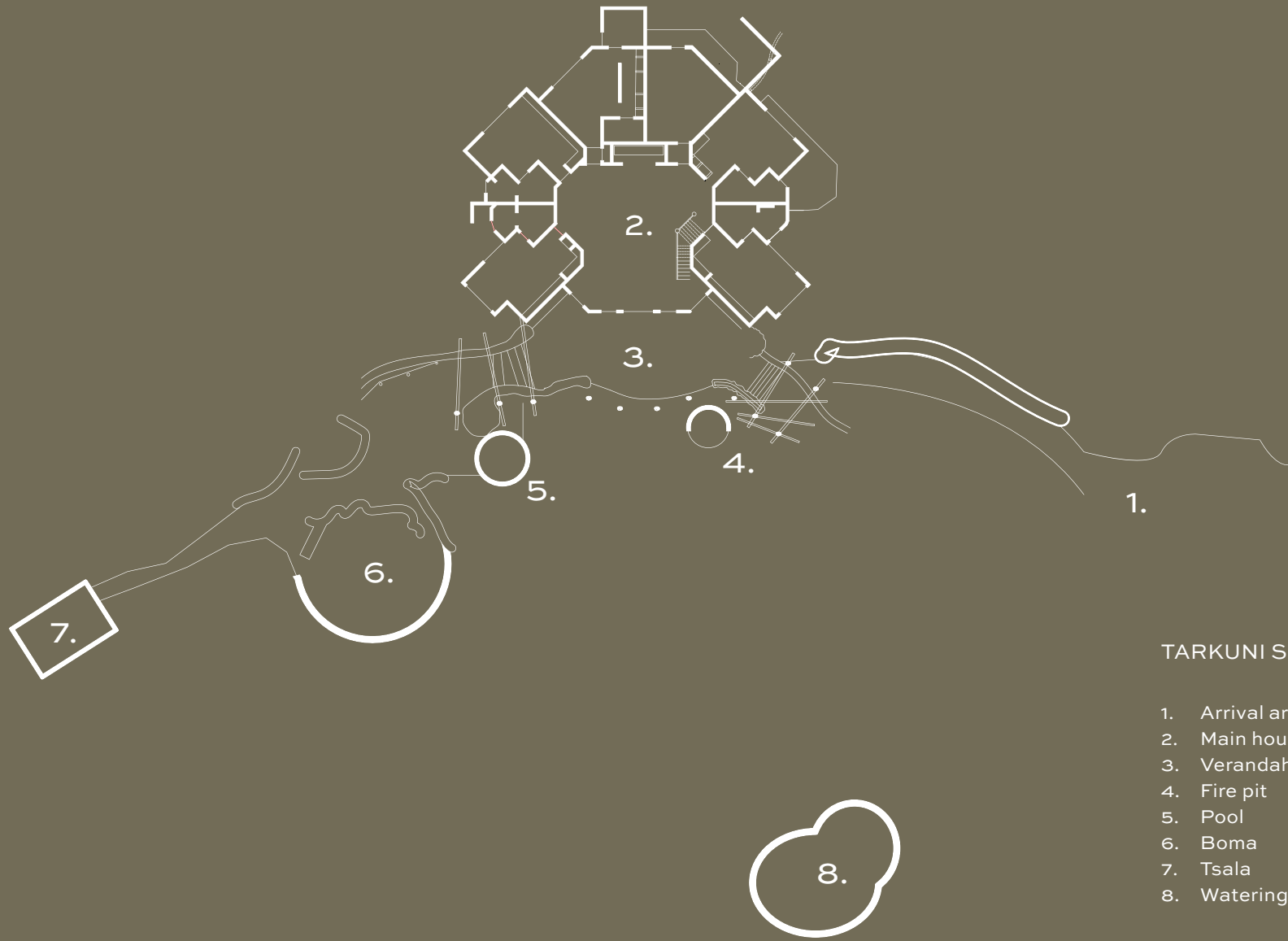
TSWALU





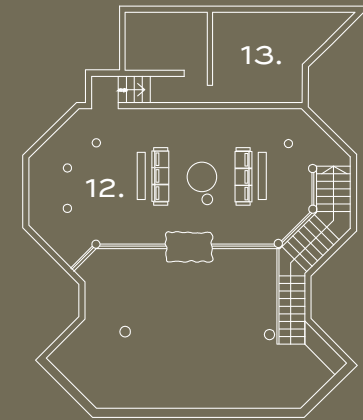
To support guest wellbeing, the spa treatment room is a cocoon of calm, designed for restoration and relaxation at any time of the day.

TSWALU



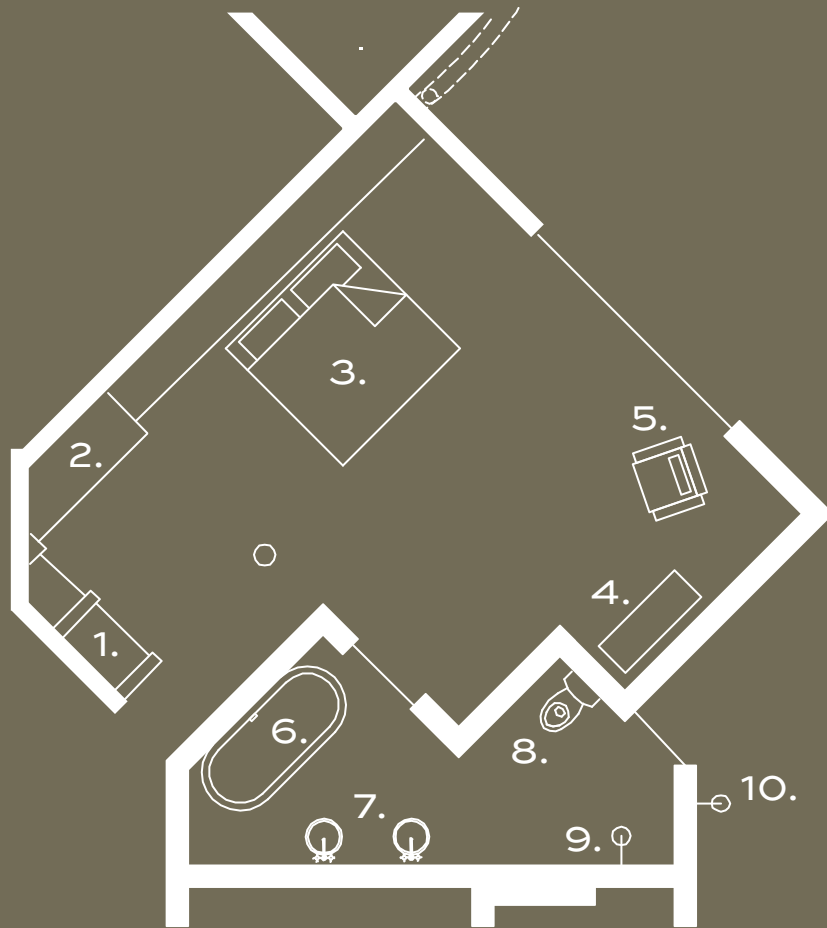
TARKUNI SITE MAP

1. Arrival area
2. Main house
3. Verandah
4. Fire pit
5. Pool
6. Boma
7. Tsala
8. Watering hole



### TARKUNI FLOORPLAN

- 1. Verandah Lounge
- 2. Verandah Dining
- 3. Lounge
- 4. Dining
- 5. Self-service bar-deli
- 6. Suite 1
- 7. Suite 2
- 8. Suite 3
- 9. Suite 4
- 10. Suite 5
- 11. Kitchen
- 12. Mezzanine Lounge
- 13. Spa treatment room



## TARKUNI SUITE

1. Cupboards
2. Vanity desk
3. Bed
4. Writing desk
5. Occasional chair
6. Bathtub
7. Double vanity
8. Toilet
9. Walk-in shower
10. Outdoor shower

